

# WHY CHOOSE IWP FOR YOUR TRUSTED HOME?

✓ **Trusted Experts:** Decades of proven experience and satisfied customers.

✓ **Local Knowledge:** We understand the unique foundation needs of Kansans.

✓ **True Craftsmanship:** Attention to detail and superior workmanship in every project.

✓ **Quality You Can Count On:** Durable, reliable repairs built to last.

✓ **Personalized Service:** Tailored solutions designed to fit your specific foundation needs.



“ **REPAIRING THE  
PAST, STABILIZING  
THE FUTURE.** ”



Contact us today to schedule a consultation and get a free estimate

**316-308-8507**

More Information

[www.Kansasfoundationrepair.com](http://www.Kansasfoundationrepair.com)

@iwpfoundationrepair



1835 N Wabash Ave. Wichita, KS



Built to Hold. Built to Last.  
**BASEMENT  
WALL SUPPORT**

316-308-8507

[Kansasfoundationrepair.com](http://Kansasfoundationrepair.com)





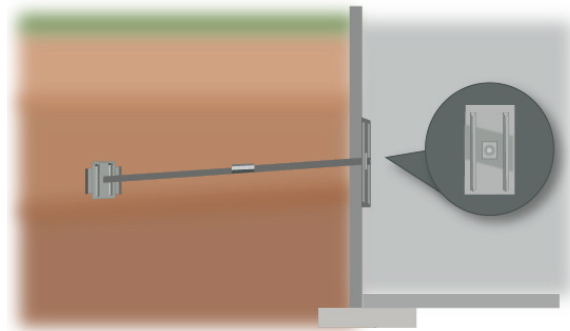
## IS YOUR BASEMENT WALL TELLING YOU SOMETHING?



### Common warning signs include:

- Horizontal or stair-step cracks
- Bowing or leaning basement walls
- Walls pushing inward at the top or middle
- Cracks widening over time
- Doors or windows sticking near basement level

## OUR WALL SUPPORT SOLUTIONS



### WALL ANCHOR

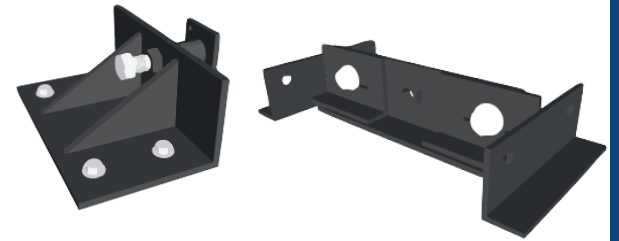
- Best for walls bowing inward
- Steel plates installed inside and outside of the home
- Anchors transfer pressure to stable soil
- Can gradually straighten walls over time



### STEEL I-BEAM

- Ideal for severe wall movement or limited exterior access
- Heavy-duty steel beams reinforce walls from the inside
- Permanent stabilization solution
- Minimal disruption to your basement space

## INSTALLATION TO WORK WITH YOUR FLOOR JOISTS



Parallel

Perpendicular

Steel I-Beams are installed based on the direction of your home's floor joists to ensure proper load transfer and long-term stability.

### PARALLEL I-BEAMS

- Transfers wall pressure into the existing framing system.
- Common in basements with open or accessible joists.

### PERDENDICULAR I-BEAMS

- Distributes pressure evenly across multiple joists.
- Ideal when joist direction or spacing requires additional support.

## OUR SIMPLE PROCESS

### What to Expect with IWP

#### 1. Free Evaluation

We assess wall movement and determine the right solution.

#### 2. Clear Recommendation

You'll receive an honest plan tailored to your home.

#### 3. Professional Installation

Our crew installs your wall support system efficiently.